



EUROPEAN OPEN SCHOOL COMBAT GAMES 2025

INCLUDING STUDENTS WITH DISABILITIES

ROMANIA / BUCHAREST

10 - 17 JULY 2025



BULLETIN 1



TABLE OF CONTENT

PART 1

- EVENT GENERAL
 - INTRODUCTION
 - WORDS OF WELCOME
 - HOST CITY - BUCHAREST
 - COMPETITION VENUE
 - ACCOMMODATION
 - EVENT MANAGEMENT
 - PROVISIONAL PROGRAM
 - COMPOSITION OF THE DELEGATION
 - REGISTRATION
 - FINANCIAL INFORMATION
 - TRAVELING & VISA
 - ADDITIONAL INFORMATION
 - COMMUNICATION

PART 2

- SPORT
 - BOXING
 - KARATE
 - JUDO
 - JU-JITSU
 - TAEKWONDO ITF & WT
 - SAMBO
 - WRESTLING
 - KYOKUSHINKAI
 - FREE STYLE KICKBOXING
 - KEMPO
 - SPORT-SPECIFIC CATEGORIES

PART 1

EVENT GENERAL



INTRODUCTION

European School Sport Federation was established in 2020 just few days before Covid-19 cises hit the world. From that time till now, those who were included in the work of ESSF from the beginning, made great efforts to set goals and make plans for the future of the federation.

European Open School Combat Games 2025 in Romania/Bucharest is the second edition of the combat event for schools at European level. ESSF chose combat sports as those whou are most popular sports among school children, as well as for its availability all around Europe.

European Open School Combat Games 2025 (EOSCG) is a special sport event designed to explore innovative competition formats which create their own path through the field of school sport network. The event is a gateway for celebration school sport events entering to the ESSF sports system. This type of event also allows the ESSF to establish solid cooperation with European and international sport federations (IFs) and other sports institutions linked to new sports. These events establish new pathways to high-end championships, with the goal of aligning events on european level and not only. However, these event shall be designed to give even more schools and selected teams and individuals the opportunity to take part.

EOSCG is open to the participation of school teams of the ESSF members, as well as non ESSF members and directly applying schools, provided that they follow all ESSF regulations and that the institutions that wish to enter the event are recognized by an official national or sports authority.

Age categories and sports for EOSCG are outlined in their respective sport-specific rules.

The educational program and the sports format of the event shall always be adopted to the age of participants.

So, let us start together in this mission of making ESSF recognizable around Europe! We look forward to making history together!



WORDS OF WELCOME

Message from the President of the European School Sport Federation

Dear friends,

It is with great pride and joy that I welcome you on behalf of the European School Sports Federation to the Combat Games 2025 in Bucharest, Romania.

ESSF remains firmly committed to promoting school sport as a platform for education, personal development, and unity across our continent. Through events like these, we aim to bring together young athletes from all corners of Europe, not only to compete, but to connect, learn from one another, and build lasting friendships.

Combat sports embody values that resonate deeply with our mission: discipline, respect, resilience, and solidarity. These Games are more than just a competition, they are a celebration of youth, diversity, and the power of sport to shape better individuals and a better society.

I warmly invite each of you to embrace this opportunity with open hearts and determined spirits. Let your passion lead the way, your respect define your actions, and your courage inspire others.

Together, let us make Combat Games 2025 an unforgettable chapter in the story of European school sport.



Željko Tanasković, ESSF President



WELCOME TO BUCHAREST

Bucharest is the capital and largest city of Romania. The metropolis stands on the River Dâmbovița in south-eastern Romania. Its population is officially estimated at 1.76 million residents within a greater metropolitan area of 2.3 million residents, which makes Bucharest the 8th most-populous city in the European Union. The city area measures 240 km² and comprises 6 districts (Sectoare), while the metropolitan area covers 1,811 km². Bucharest is a beta global city, a major cultural, political and economic hub, and the country's seat of government.



Bucharest was first mentioned in documents in 1459. The city became capital in 1862 and is the centre of Romanian media, culture, and art. Its architecture is a mix of historical (mostly Eclectic, but also Neoclassical and Art Nouveau), interbellum (Bauhaus, Art Deco, and Romanian Revival architecture), socialist era, and modern. In the period between the two World Wars, the city's elegant architecture and the sophistication of its elite earned Bucharest the nicknames of Little Paris (Romanian: Micul Paris) or Paris of the East (Romanian: Parisul Estului). Although buildings and districts in the historic city centre were heavily damaged or destroyed by war, earthquakes, and even Nicolae Ceaușescu's program of systematization, many survived and have been renovated. In recent years, the city has been experiencing an economic and cultural boom. It is one of the fastest-growing high-tech cities in Europe, according to the Financial Times, CBRE, TechCrunch, and others. UiPath, a global startup founded in Bucharest, has reached over \$10 billion in valuation.



In 2016, the historical city centre was listed as 'endangered' by the World Monuments Watch. In 2017, Bucharest was the European city with the highest growth of tourists who stay over night, according to the Mastercard Global Index of Urban Destinations. As for the past two consecutive years, 2018 and 2019, Bucharest ranked as the European destination with the highest potential for development according to the same study.



In January 2023, there were 1.74 million inhabitants living within the city limits, and adding the satellite towns around the urban area, the proposed metropolitan area of Bucharest would have a population of 2.3 million people. In 2020, the government used 2.5 million people as the basis for pandemic reports. Bucharest is the eighth largest city in the European Union by population within city limits, behind Warsaw, Poland and one position ahead of Budapest, Hungary.

Economically, Bucharest is the most prosperous city in Romania and the richest capital and city in the region, surpassing Budapest a few years ago.

The city has a number of large convention facilities, educational institutes, cultural venues, traditional 'shopping arcades' and recreational areas.

The city proper is administratively known as the 'Municipality of Bucharest' (Romanian: Municipiul București), and has the same administrative level as that of a national county, being further subdivided into six sectors, each governed by a local mayor.



COMPETITION VENUE

The main venue of the ESSF Combat Games 2025 will be the Bucharest Polivalent Sports Hall, a modern and spacious arena located in the heart of the Romanian capital. In addition to the main venue, competitions will also take place at several other top-level facilities across Bucharest and its surroundings:

- Dinamo Sports Hall
- Rapid Sports Hall
- Appolo Sports Hall
- Sydney 2000 Sports Hall – located within the Olympic Izvorani Complex
- Triumf Arche Stadium

All venues are equipped to host international competitions and provide optimal conditions for athletes, officials, and spectators alike.



ACCOMMODATION

To ensure a comfortable and enjoyable stay during the Combat Games 2025, all participants will be accommodated in high-standard hotels carefully selected by the organizers. Each hotel has been chosen for its quality of service, proximity to competition venues, and suitability for hosting international delegations. Participants can expect modern amenities, professional hospitality, and a safe, welcoming environment throughout their stay in Bucharest.

More information will be provided by the LOC.



EVENT MANAGEMENT

The successful organization of Combat Games 2025 is the result of close cooperation between the European School Sports Federation (ESSF) and the Union of School Sports Association (UASS), which serves as the local technical and organizational committee. To ensure a smooth and professional execution of the event, a dedicated event management team has been appointed, covering all operational, technical, and logistical aspects of the competition.

Below you will find the official contact information for the local organizing committee, the ESSF headquarters, as well as the appointed liaison coordinator between both organizations. These contacts are available to support delegations, resolve logistical matters, and provide additional information throughout the event.



European School Sport Federation

Office – info@europeanschoolsport.com

Contact: Gorica Bilak-Moconja, ESSF Sports Director



Local Organising Committee

Contact: Diana Ilhan, +40735091230

Email: comunicare@uass.ro



Operations Coordinator – ESSF & UASS

Contact: Constantin Caliman, +40747016106

Email: caliman.constantin@gmail.com



PROVISIONAL PROGRAM

Thursday 10 July 2025

- Arrival of delegations
- Accreditation
- Coaches&Referees Seminar
- Meetings (heads of delegations/coaches/field of play officials)
- Official training for all participants

Friday 11 July 2025

- Competition Day
- Opening Ceremony

Saturday 12 July 2025

- Competition Day

Sunday 13 July 2025

- Educational and Cultural Day
- Nations night
- Charity Gala Dinner

Monday 14 July 2025

- Competition Day
- ESSF Symposium at the Parliament Palace

Tuesday 15 July, 2025

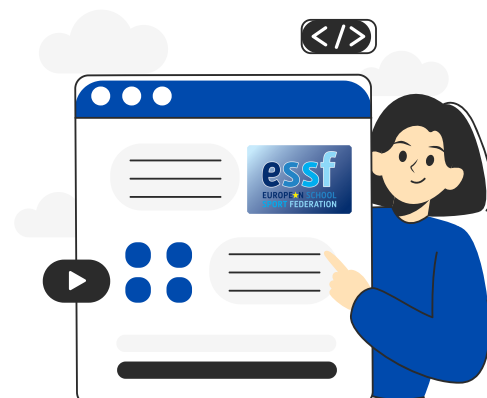
- Competition Day
- Finale/Medal Ceremony

Wednesday 16 July, 2025

- Competition Day
- Finale/Medal Ceremony
- Closing Ceremony/Farewell party

Thursday 17 July, 2025

- Departure of delegations



*Please note, that the official program may be subject to change. Any relevant changes will be communicated to the registered delegations prior to the event. The draw will be carried out by LOC !



COMPOSITION OF THE DELEGATION

Each delegation shall consists of:

- 1. Head of delegation - mandatory;**
- 2. Student athletes - mandatory;**
- 3. Team official(s)**
 - a. Coaches - mandatory;**
 - b. Other team officials - optional;**
- 4. Referees - mandatory;**
- 5. Additional adults - optional;**

NOTE:

Any other persone not specified during registration or exceeding the quotas specified in this document will not be considered part of the official delegation and will not be accredited by the LOC.

HEAD OF DELEGATION

There is a mandatory number of one (1) head of delegation per register delegation.

- The head of delegation shall be the sole intermediary between the delegation and the Local Organising Committee, the ESSF Delegate.
- He/she may not combine the function with any other official role (i.e., coach, referee, etc.).

STUDENT ATHLETES

Each team HAVE UNLIMITED number of students.

All student athletes must be attending schools which provide a general e ducation. The following are not eligible to participate:

- Attendees of vocational schools who only attend a school as a complement to their vocational training and are not full-time students with segment of general education.
- Students enrolled at schools which provide sports training without any general education.
- Part-time (e.g. afternoon) sports schools which take pupils from a variety of schools for training in one or more sports.

TEAM OFFICIALS (COACHES AND OTHER TEAM OFFICIALS)

COACHES

All coaches and referees must attend the Technical Meeting. Coaches and referees who do not take part in the seminar will not be able to enter the competition areas.

Coaches and Referees must proof the qualifications.

Mandatory number of coaches according the athletes number is on bellow:

ATHLETES	COACHES
1 to 6	1
7 to 13	2
14 to 20	3
21 to 27	4
28 to 34	5
35 to 40	6
GENERALE RULE : 1 coach per 6 athletes per sport	

OTHER TEAM OFFICIALS

- Each team can enter (optional) maximum 2 other team officials.
- The function of each other team officials must be specified during the registration process (Doctor, Physiotherapist, Trainer, Statistician, Team manager etc.).



REFEREES

Each country should bring referees mandatory, as it follows :

- KARATE (for kata and for kumite) who will participate in the seminar and work during the competition. At the end of the competition all referees and judges will receive a Certificate of participation and a Certificate with the qualification achieved. Referees and Judges who possess a qualification from international federations, will be recognized. It is necessary to make proof of qualifications.
- BOXING mandatory with International qualification
- JUDO mandatory with IJF qualification.
- JU-JITSU mandatory with JJUE or JJIF qualification.
- FREE STYLE KICKBOXING International level qualification.
- KEMPO International level qualification.
- TAEKWONDO WF and ITF mandatory with WF or ITF qualification.
- SAMBO mandatory with FIAS qualification.
- WRESTLING mandatory with UWW qualification.
- KYOKUSHINKAI KARATE mandatory with International or National qualification.
- KARATE FOR DISABLED – IKKAIDO There will be judges selected for Ikkaido competition and advices during judge course. There will be additional instructions for IKKAIDO judges.

ATHLETES	REFEREES
1 to 10	1
11 to 20	2
21 to 30	3
31 to 40	4
41 to 50	5
51 to 60	6
GENERALE RULE : 1 referee per 10 athletes per sport	
*Failure to provide the required number of referees will lead to a fee of 100 Euros/referee, to be paid to the organiser.	

ADDITIONAL ADULTS

The function of each additional adult must be specified during the registration process (interpreter, security personnel, ministry representative, media, etc.).

Delegations can register up to 1 additional adult per 10 participants.

#PARTICIPANTS	#ADDITIONAL ADULTS
1 to 10	1
11 to 20	2
21 to 30	3
31 to 40	4
41 to 50	5
51 to 60	6
61 to 70	7
71 to 80	8
81 to 90	9
91 to 100	10
Generale rule : 1 additional adult per 10 participants	



REGISTRATION

How to register

All members/schools who intend to participate in the event should fill in a registration form, which can be found enclosed to Bulletin 1. All application will be sent to email office@uass.ro.

The registration process is divided into 2 phases:

Phase 1

March 24, 2025 – May 25, 2025

During registration phase 1 registering delegations shall indicate their intention of participating, the number of teams per category that they wish to enter, and an exact number of participants per team. All ESSF members and Non -ESSF members are expected to pay the deposits for their teams or reach an agreement with the ESSF by May 26, 2025.

Phase 2

May 26, 2025 – June 25, 2025

During registration phase 2, countries are expected to enter the exact detailed information for each participant (name, date of birth, gender, photo, dietary requirements). In addition, submitting the travel plan is required. Registration form 2 will be sent on delegation e-mail.

*see more information on the deposit in the "deposit" section below



Registration Deadlines Summary

March 24, 2025	Opening of registration phase 1
May 25, 2025 (23:59 CET) *deposit payment	Closing of registration phase 1
May 26, 2025	Opening of registration phase 2
June 25, 2025 (23:59 CET) *final payment	Closing of registration phase 2



FINANCIAL CONDITIONS

To participate, each Delegation is required to make two (2) payments:

1. Deposit payment
2. Balance fee payment

DEPOSIT PAYMENT

Along with the entry and in order to have access to registration phase 2, participating country will need to pay a deposit of **100€** per participant entered in Phase 1.

Please note that the participation to the event is granted only by the deposit payment.

Deadline of deposit payment: May 25, 2025 (23:59 CET)

The sum will be deducted from the total participation cost.

The deposit must be sent as a single payment for the whole delegation by the organisation responsible for school sport (federation, trust, ministry...).

- The deposit is non-refundable in the event of non-participation.
- Waivers to the payment of the deposit, for whatever reasons, are to be discussed with the ESSF office and to be agreed upon before the deposit payment deadlines.

The deposit for the registered teams per category shall be paid by May 25, 2025 (23:59 CET)

If the deposit is not paid within the given deadline, the registrations will not be considered valid and the team will be automatically deleted.

Deposit shall be paid by bank transfer to the to the following account (all bank charges are to be met by the participating country):

UASS – Uniunea Asociatiilor Sportive Scolare
Bucharest/Romania, CA Rosetti Street 40, Ap. 2, 2nd Sector,
Fiscal Code:48101883
IBAN:

RON payments: R083BTRLRONCRT0C01996601
EURO payments : R003BTRLEURCRT0C01996602
Transilvania Bank
SWIFT Code : BTRLRO22 XXX



BALANCE FEE PAYMENT

The balance fee payment is the participation fee minus the deposit which has already been paid. The balance fee payment is to be paid before June 25, 2025.



PARTICIPATION FEE

The participation fee covers full board accommodation for the duration of the event plus competition, cultural programme activities and all local transport from the arrival to the official port of entry to the departure of the team.

The participation fee is composed of:

Accommodation Rates by night:

40€ night/delegation member (**Hotel and Hostel)

60€ night/delegation member (***Hotel)

80€ night/delegation member (****Hotel)

100€ night/delegation member (*****Hotel)



ESSF levy: 40€ per delegation member (ESSF member) or 100€ per delegation member (non ESSF member)

RATES BY NIGHT

Team member	Occupancy	2**hostel & other	3***hotel	4*** hotel	5**** hotel
Head of Delegation	Single occupancy	40€	60€	80€	100€
Coach	Double occupancy	40€	60€	80€	100€
	Single occupancy	80€	120€	160€	200€
Athlete	2-4 bedded rooms	40€	60€	80€	100€
Additional adult	Double occupancy	40€	60€	80€	100€
	Single occupancy	80€	120€	160€	200€
Other Team official	Double occupancy	40€	60€	80€	100€
	Single occupancy	80€	120€	160€	200€
Field of Play official	Double occupancy	40€	60€	80€	100€
	Single occupancy	80€	120€	160€	200€

The table below shows an overview of the minimum participation fee per participant.

No. Nights		Rate by night (min)		ESSF levy	Total (minimum/participant)
7	x	40€	+	40€	320 €

The table below shows an overview of the minimum participation fee per participant in 3*** hotel

No. Nights		Rate by night (min)		ESSF levy	Total (minimum/participant)
7	x	60€	+	40€	460 €

The table below shows an overview of the minimum participation fee per participant in 4**** hotel

No. Nights		Rate by night (min)		ESSF levy	Total (minimum/participant)
7	x	80€	+	40€	600 €



The table below shows an overview of the minimum participation fee per participant with individual events fee and no team event fee:

No. Nights		Rate by night (min)		ESSF levy		Total (minimum/participant)
7	x	40€	+	40€	=	320 €

All participants from Romania who do not want accommodation / meals / transport, will pay an extra fee:

Extra Fee		ESSF levy		Total (minimum/participant)
50€	+	40€	=	90 €

CHARITY GALA DINNER

A charity gala dinner is organised during the event. All Heads of Delegation are expected to take part in the dinner **free of charge**.

More information on the Gala dinner will be given in Bulletin 2. The participation to the gala dinner will be declared over the registration process Phase 2.

The balance fee payment is to be paid before the start of the event to the following LOC account (all bank charges are to be met by the participating country).

UASS – Uniunea Asociatiilor Sportive Scolare
2nd Sector, Fiscal Code:48101883
Bucharest/Romania, CA Rosetti Street 40, Ap. 2,

RON payments: R083BTRLRONCRT0C01996601
EURO payments : R003BTRLEURCRT0C01996602

Transilvania Bank
SWIFT Code : BTRLRO22 XXX






TRAVELLING AND VISA

The followings are the official ports of entry:



International Airport „Henri Coanda”
Otopeni Bucharest



Bucharest Main Railway Station

Traveling

Travel to the official ports of entry is to be arranged and financed by each participating delegation. Delegations are to arrive on July 10, 2025 and depart on July 17, 2025. To organized an extended stay for the delegation (before or after the event) is a matter of the delegation concerned. It shall not be the responsibility of the Local Organising Committee (LOC). LOC will ensure a transportation from ports of entry to accomodation.

VISA

Each participating delegation is required to check whether a visa is needed to enter Romania. Please contact the related Embassy or Consulate to consult visa application procedure. For any request of invitation letters or any queries over VISA, please contact Mrs. Magda Camenidis at comunicare@uass.ro



Insurance

Each participating delegation is required to provide insurance for each member of its delegation. At a minimum, the insurance is to cover civil liability, material damage and medical costs.



ADDITIONAL INFORMATION

► USEFUL INFORMATION

Currency : Romanian leu (leu)

Time zone : Eastern European Time

1 EUR = 5,06 leu

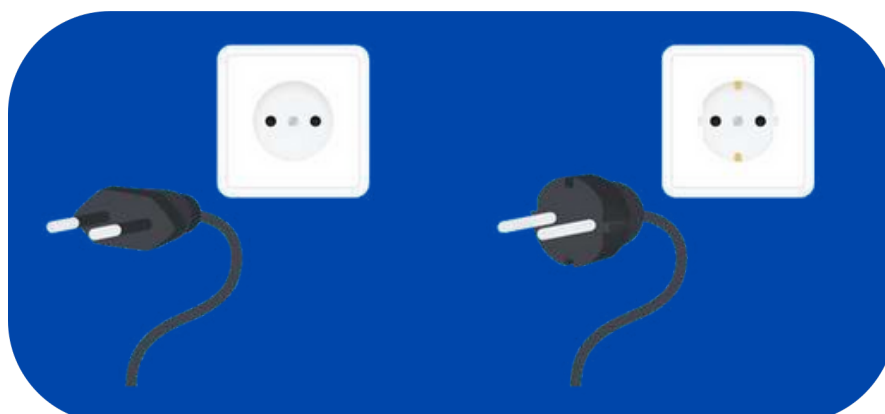
UTC+03:00

► Weather in Romania



► Power plug

For Romania there are two associated plug types, types C and F. Plug type C is the plug which has two round pins and plug type F is the plug which has two round pins with two earth clips on the side. Romania operates on a 230V supply voltage and 50Hz.



ADDITIONAL INFORMATION

► Credit cards

All major credit cards are accepted.

► Vaccines

There are no mandatory vaccines specifically required for travel to Romania for travelers.

► Local Sim Cards

Major Mobile Operators in Romania

1. Orange Romania
2. Vodafone Romania
3. Telekom Romania

Price: All operators are in the price range from 5eur to 15eur depending on the plan

Where to Buy: Operator stores, airports, kiosks, supermarkets.

► Water

Tap water is drinkable

► Exchange office

Participants arriving for the competition can exchange foreign currency at several official exchange offices located in the city. We recommend using authorized exchange services to ensure fair rates and avoid potential issues.

Most exchange offices are open from 08:00 to 20:00, including weekends. Some banks also offer currency exchange services during their working hours.

The most commonly accepted currencies for exchange are EUR, USD, and GBP. Please make sure to bring valid identification (passport or ID card) when exchanging money.

► Safety

Romania is generally a safe country for travelers. Violent crime is rare, and tourists can move freely in cities and rural areas. However, as in any destination, it's good to stay cautious and aware of your surroundings. Here are key safety aspects to consider:



COMMUNICATION

Get in touch with ESSF!

Show us how your country/region and teams are getting ready for the event and send us your teams pictures, preparation, and training videos.



@essfsports



/essfsports



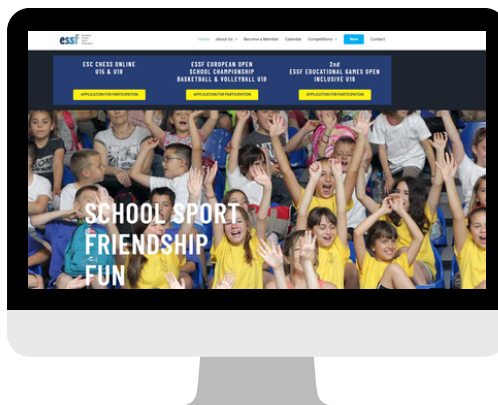
/essfsports

Don't forget to tag and follow ESSF social media accounts and use the hashtag of the event:

#ESSFsports #ESSFCombatGames #ESSFRomania2025

Other communication channels

ESSF Website: www.europeanschoolsport.com



Looking forward to see you in Romania on 10 – 17 July 2025!



PART 2

SPORT



SPORT SPECIFICS - BOXING

Gender category

Boys / Girls

Event format

Individual

Age category

Cadets. Age 13-14 years (Born in 2011 – 2012)

Juniors. Age 15-16 years (Born in 2009-2010)

Youth Age 17-18(+18) years (Born 2006-2007-2008)

Maximum athletes per delegation

Unlimited athletes per category/event

Team format

A team formed by student-athletes that can be enrolled in different schools in the same country which they represent.

Participation

This event is open for participation to:

- **ESSF members:** Schools Sport Entities recognised as such by the General Assembly and in order with their rights and obligations;
- **Non-ESSF members:** highest institution responsible for school sport recognized by the government of a country that is not member of ESSF;
- **Directly applying schools (DAS)** can either be :
 1. A school not affiliated to an ESSF member
 2. A school affiliated to an ESSF member but not registering through this ESSF member.



SPORT SPECIFICS - KARATE

Gender category

Boys / Girls

Event format

Individual/Teams Competition/Students with disabilities

From : all karate styles accepted

Age category

Children I. Age 5-6 years (Born in 2019-2020)

Children II. Age 7-8 years (Born in 2017-2018)

Children III. Age 9-10 years (Born in 2015-2016)

Juvenil. Age 11-12 years (Born in 2013-2014)

Cadets. Age 13-14 years (Born in 2011-2012)

Juniors I. Age 15-16 years (Born in 2009- 2010)

Juniors II. Age 17-18 & +18 years (Born in 2006-2007-2008)



Team format

A team formed by student-athletes that can be enrolled in different schools in the same country which they represent.

Maximum teams per delegation

Unlimited teams for children and juvenil category and 2 team/delegation/each cadets&juniors category/event

Participation

This event is open for participation to:

- **ESSF members:** Schools Sport Entities recognised as such by the General Assembly and in order with their rights and obligations;
- **Non-ESSF members:** highest institution responsible for school sport recognized by the government of a country that is not member of ESSF;
- **Directly applying schools (DAS)** can either be :
 1. A school not affiliated to an ESSF member
 2. A school affiliated to and ESSF member but not registering through this ESSF member.



SPORT SPECIFICS - JUDO

Gender category

Boys / Girls

Event format

Individual/Students with disabilities

Age category

Children 3 U12. Born in 2014;
Children 2 U13. Born in 2014-2013;
Children 1 U14. Born in 2013-2012;
Juniors 4 U15. Born in 2012-2011;
Juniors 3 U16. Born in 2010-2009 ;
Juniors 2 Cadets U 18. Born in 2008-2007-2006(+18)

Team format

A team formed by student-athletes that can be enrolled in different schools in the same country which they represent.

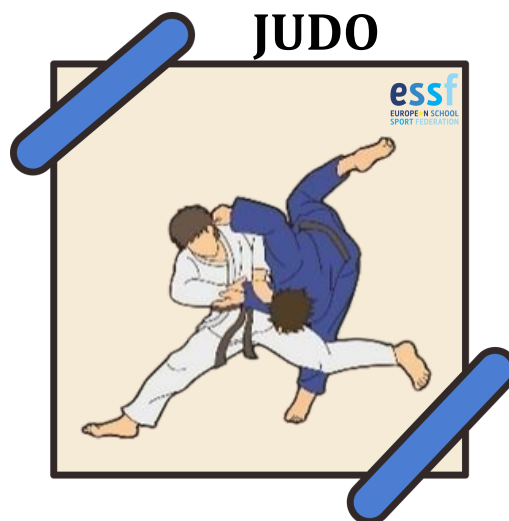
Maximum teams per delegation

Unlimited teams for all category /delegation/each event

Participation

This event is open for participation to:

- **ESSF members:** Schools Sport Entities recognised as such by the General Assembly and in order with their rights and obligations;
- **Non-ESSF members:** highest institution responsible for school sport recognized by the government of a country that is not member of ESSF;
- **Directly applying schools (DAS)** can either be :
 1. A school not affiliated to an ESSF member
 2. A school affiliated to and ESSF member but not registering through this ESSF member.



SPORT SPECIFICS - JU-JITSU

Gender category

Boys / Girls

Event format

Individual and Duo Demonstrativ

Age category

Cadets II – U12. Age 10-11 years (Born in 2014-2015)

Cadets I – U14. Age 12-13 years (Born in 2012–2013)

Junior II – U16. Age 14-15 years (Born in 2010- 2011)

Juniors I – U18. Age 16-18 years (Born in 2007-2008- 2009)



Team format

A team formed by student-athletes that can be enrolled in different schools in the same country which they represent.

Maximum teams per delegation

Unlimited teams

Participation

This event is open for participation to:

- **ESSF members:** Schools Sport Entities recognised as such by the General Assembly and in order with their rights and obligations;
- **Non-ESSF members:** highest institution responsible for school sport recognized by the government of a country that is not member of ESSF;
- **Directly applying schools (DAS)** can either be :
 1. A school not affiliated to an ESSF member
 2. A school affiliated to and ESSF member but not registering through this ESSF member.



SPORT SPECIFICS

TAEKWONDO ITF & WT

Gender category

Boys / Girls

Event format

Individual

Age category - ITF

Children. Age 8-10 years (Born in 2015-2016-2017)

Cadets. Age 11-13 years (Born in 2012-2013-2014)

Juniors. I Age 14-15 years (Born in 2010 - 20011)

Juniors. II Age 16-17 years (Born in 2007 - 2008)

Age category - WT

Children. Age 9-11 years (Born in 2014-2015-2016)

Cadets. Age 12-14 years (Born in 2011-2012-2013)

Juniors. Age 15-18 years (Born in 2007-2008-2009-2010)

Team format

A team formed by student-athletes that can be enrolled in different schools in the same country which they represent.

Maximum teams per delegation

Unlimited teams

Participation

This event is open for participation to:

- **ESSF members:** Schools Sport Entities recognised as such by the General Assembly and in order with their rights and obligations;
- **Non-ESSF members:** highest institution responsible for school sport recognized by the government of a country that is not member of ESSF;
- **Directly applying schools (DAS)** can either be :
 1. A school not affiliated to an ESSF member
 2. A school affiliated to and ESSF member but not registering through this ESSF member.



SPORT SPECIFICS - SAMBO

Gender category

Boys / Girls

Event format

Individual

Age category

Cadets. Age 14-15 years (Born in 2010-2011)

Juniors. I Age 16-17-18+18 years (Born in 2006-2007- 2008-2009)

Team format

A team formed by student-athletes that can be enrolled in different schools in the same country which they represent.

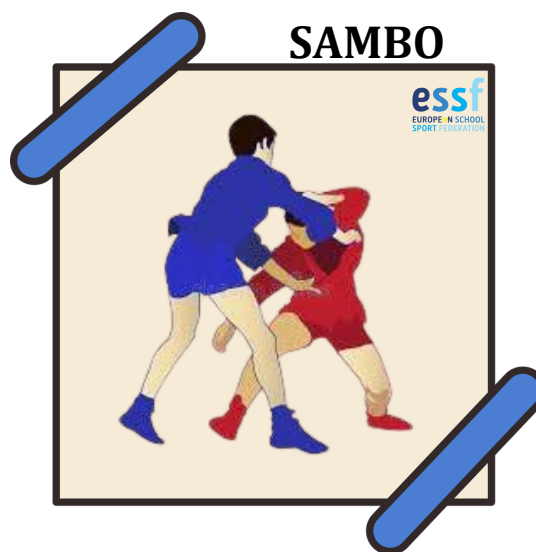
Maximum teams per delegation

Unlimited teams

Participation

This event is open for participation to:

- **ESSF members:** Schools Sport Entities recognised as such by the General Assembly and in order with their rights and obligations;
- **Non-ESSF members:** highest institution responsible for school sport recognized by the government of a country that is not member of ESSF;
- **Directly applying schools (DAS)** can either be :
 1. A school not affiliated to an ESSF member
 2. A school affiliated to and ESSF member but not registering through this ESSF member.



SPORT SPECIFICS - WRESTLING

Gender category

Boys/Girls

Event format

Individual

Age category

Cadets U 16. Age 14-16 years

(Born in 2009-2010-2011)

Juniors U 18. Age 17-18(+18) years

(Born in 2006-2007-2008)

Team format

A team formed by student-athletes that can be enrolled in different schools in the same country which they represent.

Maximum teams per delegation

Unlimited teams

Participation

This event is open for participation to:

- **ESSF members:** Schools Sport Entities recognised as such by the General Assembly and in order with their rights and obligations;
- **Non-ESSF members:** highest institution responsible for school sport recognized by the government of a country that is not member of ESSF;
- **Directly applying schools (DAS)** can either be :
 1. A school not affiliated to an ESSF member
 2. A school affiliated to and ESSF member but not registering through this ESSF member.



SPORT SPECIFICS - KYOKUSHINKAI

Gender category

Boys / Girls

Event format

Individual KUMITE and KATA

Age category

Children I. Age 10-11 (Born in 2014-2015)

Children II. Age 12-13 (Born in 2012-2013)

Cadets. Age 14-15 (Born in 2010-2011)

Juniors. Age 16-17 (Born in 2008-2009)

Age +18. Age +18 (Born in 2006-2007)



Team format

A team formed by student-athletes that can be enrolled in different schools in the same country which they represent.

Maximum teams per delegation

Unlimited teams

Participation

This event is open for participation to:

- **ESSF members:** Schools Sport Entities recognised as such by the General Assembly and in order with their rights and obligations;
- **Non-ESSF members:** highest institution responsible for school sport recognized by the government of a country that is not member of ESSF;
- **Directly applying schools (DAS)** can either be :
 1. A school not affiliated to an ESSF member
 2. A school affiliated to and ESSF member but not registering through this ESSF member.



SPORT SPECIFICS

FREE STYLE KICKBOXING

Gender Category

Boys / Girls

Event format

Freestyle Semi, Freestyle Light, Freestyle K1 Light, Freestyle Kickboxing Age category

Age category

Children I. Age 5-6 (Born in 2019-2020)
 Children II. Age 7-8 (Born in 2018-2017)
 Children III. Age 9-10 (Born in 2016-2015)
 Cadets I. Age 11-12 (Born in 2014-2013)
 Cadets II. Age 13-14 (Born in 2012-2011)
 Juniors I. Age 15-16 (Born in 2010-2009)
 Juniors II. Age 17-18 (Born in 2008-2007)

Team format

A team formed by student-athletes that can be enrolled in different schools in the same country which they represent.

Maximum teams per delegation

Unlimited teams

Participation

This event is open for participation to:

- **ESSF members:** Schools Sport Entities recognised as such by the General Assembly and in order with their rights and obligations;
- **Non-ESSF members:** highest institution responsible for school sport recognized by the government of a country that is not member of ESSF;
- **Directly applying schools (DAS)** can either be :
 1. A school not affiliated to an ESSF member
 2. A school affiliated to and ESSF member but not registering through this ESSF member.



SPORT SPECIFICS - KEMPO

Gender Category

Boys / Girls

Event format

Full Kempo/Submission/Semi Kempo

Age category

Children II. Age 6-8 (Born in 2017-2018-2019)

Children I. Age 8-10 (Born in 2015-2016)

Juniors IV. Age 10-12 (Born in 2013-2014)

Juniors III. Age 12-14 (Born in 2011-2012)

Juniors II Age 14-16 (Born in 2009-2010)

Juniors I. Age 16-18(+18)(Born in 2006-2007-2008)



Team format

A team formed by student-athletes that can be enrolled in different schools in the same country which they represent.

Maximum teams per delegation

Unlimited teams

Participation

This event is open for participation to:

- **ESSF members:** Schools Sport Entities recognised as such by the General Assembly and in order with their rights and obligations;
- **Non-ESSF members:** highest institution responsible for school sport recognized by the government of a country that is not member of ESSF;
- **Directly applying schools (DAS)** can either be :
 1. A school not affiliated to an ESSF member
 2. A school affiliated to and ESSF member but not registering through this ESSF member.



BOXING - CATEGORIES

AGE CATEGORY	EVENTS		
<u>Age category</u>	<u>MALE (kg)</u>	<u>FEMALE (kg)</u>	<u>limits</u>
<u>Cadets</u> Age 13-14 years (Born in 2011-2012)	37-40, 42, 44, 46, 48, 50, 52, 54, 57, 60, 63, 66, 70, 75, 80, 90	34-36, 38, 40, 42, 44, 46, 48, 51, 54, 57, 60, 64, 70	No limit per country
<u>Juniors</u> Age 15-16 years (Born in 2009 – 2010)	44-46, 48, 50, 52, 54, 57, 60, 63, 66, 70, 75, 80, +80	44-46, 48, 50, 52, 54, 57, 60, 63, 66, 70, 75, 80, +80	No limit per country
<u>Youth</u> Age 17-18 years (Born in 2006-2007-2008)	-49, -51, -54, -57, -60, - 63.5, -67, -71, -75, -80, - 86, -92, +92	-48, 50, 52, 54, 57, 60, 63, 66, 70, 75, 81 +81	No limit per country

JUDO - CATEGORIES

AGE CATEGORY	EVENTS		
<u>Age category</u>	<u>MALE</u>	<u>FEMALE</u>	<u>limits</u>
<u>Children 3 U12</u> Born in 2014	-26 kg, -30 kg, -34 kg, -38 kg, - 42 kg, -46 kg, -50 kg, -55 kg, - 60 kg, +60 kg	-28 kg, -32 kg, -36 kg, -40 kg, -44 kg, -48 kg, -52 kg, -57 kg, +57 kg	No limit per country
<u>Children 2 U13</u> Born in 2014-2013	-26 kg, -30 kg, -34 kg, -38 kg, - 42 kg, -46 kg, -50 kg, -55 kg, - 60 kg, +60 kg	-28 kg, -32 kg, -36 kg, -40 kg, -44 kg, -48 kg, -52 kg, -57 kg, +57 kg	No limit per country
<u>Children 1 U14</u> Born in 2013-2012	-34 kg, -38 kg, -42 kg, -46 kg, - 50 kg, -55 kg, -60 kg, -66 kg, - 73 kg, +73 kg	-32 kg, -36 kg, -40 kg, -44 kg, - 48 kg, -52 kg, -57 kg, -63 kg, +63 kg	No limit per country
<u>Juniors 4 U15</u> Born in 2012-2011	-34 kg, -38 kg, -42 kg, -46 kg, - 50 kg, -55 kg, -60 kg, -66 kg, - 73 kg, +73 kg	-32 kg, -36 kg, -40 kg, -44 kg, - 48 kg, -52 kg, -57 kg, -63 kg, +70 kg	No limit per country
<u>Juniors 3 U16</u> Born in 2010-2009	-42 kg, -46 kg, -50 kg, -55 kg, - 60 kg, -66 kg, -73 kg, -81 kg, +81 kg	-40 kg, -44 kg, -48 kg, -52 kg, - 57 kg, -63 kg, -70 kg, +70 kg	No limit per country
<u>Juniors 2 Cadets U18</u> Born in 2008-2007-2006(+18)	-46 kg, -50 kg, -55 kg, -60 kg, - 66 kg, -73 kg, -81 kg, -90 kg, +90 kg	-40 kg, -44 kg, -48 kg, -52 kg, - 57 kg, -63 kg, -70 kg, +70 kg	No limit per country

JU-JITSU - CATEGORIES

AGE CATEGORY	EVENTS	
<u>Age category</u>	<u>Competition disciplines: FIGHTING /JIU-JITSU/DUAL DEMONSTRATIV</u>	<u>limits</u>
<u>Cadets II – U12</u> . Age 10-11 years (Born in 2014-2015)	Weight categories male: -25, -28, -32, -36, -40, - 44, -48, -52, +50 Weight categories female: -22, -25, -28, -32, -36, -40, -44, -48, +48	No limit per country
<u>Cadets I – U14</u> . Age 12-13 years (Born in 2012-2013)	Weight categories male: -32, -36, -40, -44, -48, - 52, -56, -62, -69, +69 Weight categories female: -25, -28, -32, -36, -40, -44, -48, -52, -57, +57	No limit per country
<u>Junior II – U16</u> . Age 14-15 years (Born in 2010- 2011)	Weight categories male: -40, -44, -48, -52, -56, - 62, -69, -77, +77 Weight categories female: -32, -36, -40, -44, -48, -52, -57, -63, +63	No limit per country
<u>Juniors I – U18</u> . Age 16-17-18 years (Born in 2007, 2008- 2009)	Weight categories male: -48, -52, -56, -62, -69, - 77, -85, +85 Weight categories female: -40, -44, -48, -52, -57, -63, -70, +70	No limit per country



TAEKWONDO ITF - CATEGORIES

AGE CATEGORY	EVENTS		
<u>Age category</u>	MALE (kg)	FEMALE (kg)	<u>limits</u>
<u>Children</u> . Age 8-10 years (Born in 2015-2016-2017)	-30, -35, -40, -45, -50, +50	-25, -30, -35, -40, -45, +45	No limit per country
<u>Cadets</u> . Age 11-13 years (Born in 2012-2013-2014)	-35, -40, -45, -50, -55, -60, +60	-30, -35, -40, -45, -50, -55, +55	No limit per country
<u>Juniors. I</u> Age 14-15 years (Born in 2010 - 20011)	-45, -50, -55, -60, -65, -70, +70	-40, -45, -50, -55, -60, -65, +65	No limit per country
<u>Juniors. II</u> Age 16-17 years (Born in 2007 - 2008)	-45, -51, -57, -63, -75, +75	-40, -46, -52, -58, -64, -70, +70	No limit per country

TAEKWONDO WT - CATEGORIES

AGE CATEGORY	EVENTS		
<u>Age category</u>	MALE(kg)	FEMALE(kg)	<u>limits</u>
<u>Children</u> . Age 9-11 years (Born in 2014-2015-2016)	-24, -27, -30, -33, -36, -40, -44, -48, -52, +52	-24, -27, -30, -33, -36, -40, -44, -48, -52, +52	No limit per country
<u>Cadets</u> . Age 12-14 years (Born in 2011-2012-2013)	-33, -37, -41, -45, -49, -53, -57, -61, -65, +65	-29, -33, -37, -41, -44, -47, -51, -55, -59, +59	No limit per country
<u>Juniors. I</u> Age 15-18 years (Born in 2007-2008-2009-2010)	-45, -48, -51, -55, -59, -63, -68, -73, -78, +78	-42, -44, -46, -49, -52, -55, -59, -63, -68, +68	No limit per country

SAMBO - CATEGORIES

AGE CATEGORY	EVENTS		
<u>Age category</u>	MALE (kg)	FEMALE (kg)	<u>limits</u>
<u>Cadets</u> . Age 14-15 years (Born in 2009-2010)	-46, -49, -53, -58, -64, -71, -79, +79	-41, -44, -47, -50, -54, -59, -65, +65	No limit per country
<u>Juniors</u> . Age 16-18+18 years (Born in 2006-2007-2008)	-53, -58, -64, -71, -79, -88, -98, +98	-47, -50, -54, -59, -65, -72, -80, +80	No limit per country



WRESTLING - CATEGORIES

AGE CATEGORY	EVENTS			
Age category	GRECO-ROMAN STYLE (kg)	FREESTYLE (kg)	FEMALE (kg)	limits
<u>Cadets U 16.</u> Age 14-16 years Born in 2009-2010-2011	-41-45, -48, -51, -55, -60, -65, -71, -80, -92, -110	-41-45, -48, -51, -55, -60, -65, -71, -80, -92, -110	-36-40, -43, -46, -49, -53, -57, - 61, -65, -69, -73	No limit per country
<u>Juniors U 18.</u> Age 17-18(+18) years Born in 2006-2007-2008	-55, -60, -63, -67, -72, -77, -82, -87, 97, -130	-57, -61, -65, -70, -74, -79, 86, -92, - 97, -125	-50, -53, -55, - 57, -59, -62, -65, -68, -72, -76	No limit per country

KYOKUSHINKAI KARATE- CATEGORIES

AGE CATEGORY	FEMALE (kg)	MALE (kg)	KATA	LIMITS
<u>Children I.</u> Age 10-11 (Born 2014-2015)	- 30 kg, - 35 kg, - 40 kg, + 40 kg	- 35 kg, - 40kg, - 45 kg, - 50 kg, + 50 kg	Round 1: Taikyoku 1, Taikyoku 2, Taikyoku (imposed) Round 2: Pinan 1, Pinan 2, Pinan 3 (choice) Round 3: Pinan 4, Pinan 5 (choice)	No limit per country
<u>Children II.</u> Age 12-13 (Born 2012-2013)	- 35 kg, - 40 kg, - 45 kg, + 45 kg	- 40 kg, - 45 kg, - 50 kg, - 55kg, +55 kg	Round 1: Taikyoku 3, Pinan 1, Pinan 2 (imposed) Round 2: Pinan 3, Pinan 4, Pinan 5 (choice) Round 3: Tsuki no Kata, Gekisai dai kata (choice)	No limit per country
<u>Cadets.</u> Age 14-15 (Born 2010-2011)	- 45 kg, - 50 kg, - 55 kg, + 55 kg	- 45kg, - 50 kg, - 55 kg, - 60 kg, - 65 kg, + 65 kg	Round 1: Pinan 1, 2, 3, 4, 5 (imposed) Round 2: Tsuki no kata, Gekisai dai kata, Yantsu kata (choice) Round 3: Gekisai sho kata, Saiha kata (choice)	No limit per country
<u>Juniors.</u> Age 16-17 (Born 2008-2009)	- 50 kg, - 55 kg, - 60 kg, + 60 kg	- 55 kg, - 60 kg, - 65 kg, - 70 kg, - 75 kg, + 75 kg	Round 1: Tsuki no kata, Gekisai dai kata, Yantsu kata, Gekisai sho kata, Saiha kata (imposed) Round 2: Tsuki no kata, Gekisai dai kata, Yantsu kata, Gekisai sho kata, Saiha kata (choice) Round 3: Seienchin kata, Seipai kata, Garyu kata, Kanku Dai Kata, Sushiho kata (choice)	No limit per country
<u>Age 18+</u> (Born 2006-2007 high school)	- 55 kg, - 65 kg, + 65 kg	- 60 kg, - 65 kg, - 70 kg, - 75 kg, - 80 kg, + 80 kg	Round 1: Gekisai sho kata (imposed) Round 2: Seienchin kata, Seipai kata, Garyu kata, Kanku Dai Kata, Sushiho kata (choice) Round 3: Seienchin kata, Seipai kata, Garyu kata, Kanku Dai Kata, Sushiho kata (choice)	No limit per country



FREE STYLE KICKBOXING - CATEGORIES

AGE CATEGORY	EVENTS	
<u>Age category</u>	Competition disciplines: Freestyle Semi, Freestyle Light, Freestyle K1 Light, Freestyle Kickboxing	<u>limits</u>
<u>Children I.</u> Age 5-6 (Born in 2019-2020)	Weight categories male: -25 kg, -35 kg, +35 kg Weight categories female: -25 kg, -35 kg, +35 kg	No limit per country
<u>Children II.</u> Age 7-8 (Born in 2018-2017) Baieti:	Weight categories male: -25 kg, -35 kg, -45 kg, +45 kg Weight categories female: -25 kg, -35 kg, -45 kg, +45 kg	No limit per country
<u>Children III.</u> Age 9-10 (Born in 2016-2015)	Weight categories male: -35 kg, -45 kg, -55 kg, +55 kg Weight categories female: -35 kg, -45 kg, -55 kg, +55 kg	No limit per country
<u>Cadets I.</u> Age 11-12 (Born in 2014-2013)	Weight categories male: -35 kg, -45 kg, -55 kg, -65 kg, +65 kg Weight categories female: -35 kg, -45 kg, -55 kg, -65 kg, +65 kg	No limit per country
<u>Cadets II.</u> Age 13-14 (Born in 2012-2011)	Weight categories male: -45 kg, -55 kg, -65 kg, -75 kg, -85 kg, +85 kg Weight categories female: -45 kg, -55 kg, -65 kg, -75 kg, -85 kg, +85 kg	No limit per country
<u>Juniors I.</u> Age 15-16 (Born in 2010-2009)	Weight categories male: -45 kg, -55 kg, -65 kg, -75 kg, -85 kg, -95 kg, +95 kg Weight categories female: -45 kg, -55 kg, -65 kg, -75 kg, -85 kg, -95 kg, +95 kg	No limit per country
<u>Juniors II.</u> Age 17-18 (Born in 2008-2007)	Weight categories male: -55 kg, -65 kg, -75 kg, -85 kg, -95 kg, +95 kg Weight categories female: -55 kg, -65 kg, -75 kg, -85 kg, -95 kg, +95 kg	No limit per country

KEMPO - CATEGORIES

AGE CATEGORY	EVENTS	
<u>Age category</u>	Competition disciplines: FULL KEMPO/SUBMISSION/SEMI KEMPO	<u>limits</u>
<u>Children II.</u> Age 6-8 (Born in 2017-2018-2019)	Full Kempo: -25 kg, 30 kg, -35 kg, -40 kg, -45 kg, -50 kg, -55 kg, -60 kg, -65 kg, -70 kg, -75 kg, -80 kg, -85 kg, -90 kg, -95 kg, +95 kg.	No limit per country
<u>Children I.</u> Age 8-10 (Born in 2015-2016)	Submission: -25 kg, 30 kg, -35 kg, -40 kg, -45 kg, -50 kg, -55 kg, -60 kg, -65 kg, -70 kg, -75 kg, -80 kg, -85 kg, -90 kg, -95 kg, +95 kg.	No limit per country
<u>Juniors IV.</u> Age 10-12 (Born in 2013-2014)		
<u>Juniors III.</u> Age 12-14 (Born in 2011-2012)		
<u>Juniors II.</u> Age 14-16 (Born in 2009-2010)	Semi Kempo: -25 kg, 30 kg, -35 kg, -40 kg, -45 kg, -50 kg, -55 kg, -60 kg, -65 kg, -70 kg, -75 kg, -80 kg, -85 kg, -90 kg, -95 kg, +95 kg.	No limit per country
<u>Juniors I.</u> Age 16-18 (+18) (Born in 2006-2007-2008)		



KARATE – CATEGORIES

AGE CATEGORY	EVENTS	LIMITS
KUMITE CATEGORIES	SANBON SHOBU	
*CHILDREN II (7-8 years) Born in 2017-2018)	Weight for Male: -30 kg / +30 kg Weight for Female: -30 kg / +30 kg	No limit per country *Individual and team
*CHILDREN III (9-10 years) Born in 2015-2016	Weight for Male: -35 kg / +35 kg Weight for Female: -35 kg / +35 kg	No limit per country *Individual and team
JUVENIL (11-12 years) Born in 2013-2014	Weight for Male: -45 kg / +45 kg Weight for Female: -40 kg / +40 kg	No limit per country *Individual and team
CADETS (13-14 years) Born in 2011-2012	Weight for Male: -58 kg / -65 kg / +65 kg Weight for Female: -48 kg / -55 kg / +55 kg	No limit per country *Individual and team
JUNIORS I (15-16 years) Born in 2009 – 2010	Weight for Male: -60 kg / -65 kg / +65 kg Weight for Female: -55 kg / -60 kg / +60 kg	No limit per country *Individual and team
JUNIORS II (17 – 18 & +18 years) Born in 2007-2008	Weight for Male: -65 kg / -75 kg / +75 kg Weight for Female: -55 kg / -60 kg / +60 kg	No limit per country *Individual and team

	EVENTS	AGE CATEGORY
KUMITE CATEGORIES	IPPON SHOBU	
JUVENIL (11-12 years) Born in 2013-2014	Weight for Male: -45 kg / +45 kg Weight for Female: -40 kg / +40 kg	No limit per country *Individual and team
CADETS (13-14 years) Born in 2011-2012	Weight for Male: -58 kg / -65 kg / +65 kg Weight for Female: -48 kg / -55 kg / +55 kg	No limit per country *Individual and team
JUNIORS I (15-16 years) Born in 2009 – 2010	Weight for Male: -60 kg / -65 kg / +65 kg Weight for Female: -55 kg / -60 kg / +60 kg	No limit per country *Individual and team
JUNIORS II (17 – 18 & +18 years) Born in 2007-2008	Weight for Male: -65 kg / -75 kg / +75 kg Weight for Female: -55 kg / -60 kg / +60 kg	No limit per country *Individual and team

Belts Categories (only in Kihon and kata Discipline Individual&Team)

BELTS	AGE CATEGORIES
White to orange	<u>Children I.</u> Age 5-6 years (Born in 2019-2020)
	<u>Children II.</u> Age 7-8 years (Born in 2017-2018)
	<u>Children III.</u> Age 9-10 years (Born in 2015-2016)
	<u>Juvenil.</u> Age 11-12 years (Born in 2013-2014)
	<u>Cadets.</u> Age 13-14 years (Born in 2011-2012)
Green and blue	<u>Children II.</u> Age 7-8 years (Born in 2017-2018)
	<u>Children III.</u> Age 9-10 years (Born in 2015-2016)
	<u>Juvenil.</u> Age 11-12 years (Born in 2013-2014)
	<u>Cadets.</u> Age 13-14 years (Born in 2011-2012)
Brown and black	<u>Juvenil.</u> Age 11-12 years (Born in 2013-2014)
	<u>Cadets.</u> Age 13-14 years (Born in 2011-2012)
	<u>Juniors I.</u> Age 15-16 years (Born in 2009– 2010)
	<u>Juniors II.</u> Age 17-18&+18 years (Born in 2006-2008)



CHILDREN I. 5-6 years (Born in 2019-2020)

Individual Kata Girls	No limit per country	Team Kata Girls	No limit per country
Individual Kata Boys	No limit per country	Team Kata Boys	No limit per country
Individual Kihon girls	No limit per country	Individual Kihon – Ippon girls	No limit per country
Individual Kihon boys	No limit per country	Individual Kihon –Ippon boys	No limit per country
Individual Ikkaido	No limit per country	Team Ikkaido	No limit per country

CHILDREN II. 7-8 years (Born in 2017-2018)

Individual Kata Girls	No limit per country	Team Kata Girls	No limit per country
Individual Kata Boys	No limit per country	Team Kata Boys	No limit per country
Individual Kihon girls	No limit per country	Individual Kihon – Ippon girls	No limit per country
Individual Kihon boys	No limit per country	Individual Kihon –Ippon boys	No limit per country
Individual Ikkaido	No limit per country	Team Ikkaido	No limit per country

CHILDREN III. Age 9-10 years (Born in 2015-2016)

Individual Kata Girls	No limit per country	Team Kata Girls	No limit per country
Individual Kata Boys	No limit per country	Team Kata Boys	No limit per country
Ind. Kihon-Ippon-Kumite Girls	No limit per country	Enbu Girls&Girls	No limit per country
Ind. Kihon-Ippon Kumite Boys	No limit per country	Enbu Boys&Boys	No limit per country
Individual Kihon Girls	No limit per country	Enbu Girls&Boys	No limit per country
Individual Kihon Boys	No limit per country	Individual&Team Ikkaido	No limit per country

JUVENIL. Age 11-12 years (Born in 2013-2014)

Individual Kata Girls	No limit per country	Team Kata Girls	No limit per country
Individual Kata Boys	No limit per country	Team Kata Boys	No limit per country
Individual Kihon Girls	No limit per country	Enbu Girls&Girls	No limit per country
Individual Kihon Boys	No limit per country	Enbu Boys&Boys	No limit per country
Individual Kobudo	No limit per country	Enbu Girls&Boys	No limit per country
Individual Ikkaido	No limit per country	Team Ikkaido	No limit per country

CADETS Age 13-14 years (Born in 2011-2012)

Individual Kata Girls	No limit per country	Team Kata Girls	No limit per country
Individual Kata Boys	No limit per country	Team Kata Boys	No limit per country
Ind. Fuku-Go Girls	No limit per country	Enbu Girls & Boys	No limit per country
Ind. Fuku-Go Boys	No limit per country	Enbu Boys & Boys	No limit per country
Ind. Kumite Girls	No limit per country	Enbu Girls&Girls	No limit per country
Ind. Kumite Boys	No limit per country	Kumite Team Girls	No limit per country
Individual Ikkaido	No limit per country	Kumite Team Boys	No limit per country
Individual Kobudo	No limit per country	Team Ikkaido	No limit per country

JUNIORS I. Age 15-16 years (Born in 2009- 2010)

Individual Kata Girls	No limit per country	Team Kata Girls	No limit per country
Individual Kata Boys	No limit per country	Team Kata Boys	No limit per country
Ind. Fuku-Go Girls	No limit per country	Enbu Girls & Boys	No limit per country
Ind. Fuku-Go Boys	No limit per country	Enbu Boys & Boys	No limit per country
Ind. Kumite Girls	No limit per country	Enbu Girls&Girls	No limit per country
Ind. Kumite Boys	No limit per country	Kumite Team Girls	No limit per country
Individual Ikkaido	No limit per country	Kumite Team Boys	No limit per country
Individual Kobudo	No limit per country	Team Ikkaido	No limit per country

Juniors II. Age 17-18&+18 years (Born in 2007-2008)

Individual Kata Girls	No limit per country	Team Kata Girls	No limit per country
Individual Kata Boys	No limit per country	Team Kata Boys	No limit per country
Ind. Fuku-Go Girls	No limit per country	Enbu Girls & Boys	No limit per country
Ind. Fuku-Go Boys	No limit per country	Enbu Boys & Boys	No limit per country
Ind. Kumite Girls	No limit per country	Enbu Girls&Girls	No limit per country
Ind. Kumite Boys	No limit per country	Kumite Team Girls	No limit per country
Individual Ikkaido	No limit per country	Kumite Team Boys	No limit per country
Individual Kobudo	No limit per country	Team Ikkaido	No limit per country

Explanations : Individual Kata and Team, Individual Kihon – by age and belts categories

Individual Kumite – by age and weight categories, Kumite team – by age categories

Fuku-Go its mandatory Kitei Kata+Ippon Shobu Kumite system.

Sport Data platform its mandatory!



IKKAIDO FUDOKAN KARATE

IKKAIDO

Celebration



IKKAIDO - KARATE-ESSF European Ikkaido Celebration for people with and without disabilities

Karate is a big family. Please motivate your disabled students to join our family and be a significant part. We want to offer them a platform where they can show their ability and perform their karate. Ikkaido first should be a celebration for them. Please, give them a chance of being included in the championship. First, - like a celebration - they demonstrate their kata and, if necessary, they can be assisted by another karateka or coach (e.g. blind ones). The kata is freechoice, and they will be awarded with a special Ikkaido medal. Second, - like an inclusive competition - they perform an inclusive team kata together with karateka with no disabilities against another team. Then their team performance will be judged.

CELEBRATION IKKAIDO CATEGORIES

1. Individual Kata Celebration

Categories: Boys/Girls

Only for students with disabilities, for all age categories, the kata is free.

This category is only for students with disabilities to show their ability to perform a Karate kata.

If the athlete is unable to enter the tatami or perform the kata alone, he/she can be assisted by a carrier (e.g. blind people).

For all age categories the kata is free, but it should be known in all karate styles accepted.

Wheelchair kata is completely free.

2. Kata Team

Boys/Girls

Minimum one and/or maximum two people with disabilities per team, for all age categories.

Each team will be composed of 3 athletes (1 athlete can be from another group, e.g. older, younger, sex, ...)

Mixed teams are allowed, (e.g. two girls plus one boy starts at girl competition, two boys plus one girl ...)

Each team must have minimum one and maximum two people with disabilities (inclusion aspect).

No Application of kata (bunkai) necessary.

A. CELEBRATION AGE CATEGORIES

All age categories are the same as in the official program.

B. DISABILITY CATEGORIES

An official classificatory (medical doctor) may classify athletes at the beginning of the competition.

There are 4 classification categories of disabilities for the competition:

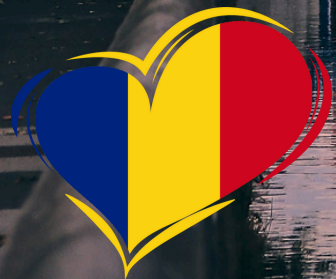
- Wheelchair User ;
- Blind and Visually Impaired ;
- People with Learning and Mental disabilities e.g. autism ;
- People with physical and other disabilities ;





SEE YOU IN ROMANIA

FOR A ONCE IN A LIFETIME EXPERIENCE



10 – 17 JULY 2025