

# ESSF EUROPEAN OPEN SCHOOL CHAMPIONSHIP U15/U18 - CHESS ONLINE 2025



**ONLINE**  
15-17 OCTOBER 2025

**BULLETIN 1**

# INTRODUCTION

***Dear ESSF and ISF Europe Members,  
Dear Participants,***

*I'm proud to represent the European School Sports Federation (ESSF), an organization dedicated to promoting school sports across Europe.*

*Our mission is to inspire and empower you by providing opportunities to engage in competitive sports, fostering values such as teamwork, respect, and fair play.*



*ESSF is making efforts to organize a variety of events and competitions that bring together students from diverse backgrounds, encouraging not only your athletic excellence but also your personal growth and cultural exchange.*

*Through our initiatives, we aim to enhance your educational experience, emphasizing the importance of physical activity, healthy lifestyles, and lifelong friendships.*

*I invite each of you to join us as we continue to champion the spirit of school sports and create unforgettable experiences for the youth of Europe! Your energy and enthusiasm are what make this journey truly special. Let's make it unforgettable together!*

*Željko Tanasković,  
ESSF President*

# ORGANISATION

## 1. MANAGEMENT

<p><b>European School Sport Federation (ESSF)</b>  Office – <a href="mailto:info@europeanschoolsport.com">info@europeanschoolsport.com</a>  Contact: Gorica Bilak-Moconja, ESSF Sports Director</p>
<p><b>Local Organising Committee</b>  Republic of Srpska School Sport Federation  Contact: Gorica Bilak-Moconja, President <a href="mailto:skolskisportsrpske@gmail.com">skolskisportsrpske@gmail.com</a>  Viber/WhatsApp: +387 65 985 770  Stuff: Nemanja Šipka, technical organizer  <a href="mailto:nemanjasipka01@gmail.com">nemanjasipka01@gmail.com</a> Viber/WhatsApp: +387 65 966 933</p>

## 2. PROGRAM

DATE	ACTIVITY
15 October 2025 Qualification tournament	U15 Qualification tournament (2010, 2011, 2012, 2013) 13:00 CEST <a href="https://worldchess.com/tournaments/essf-u15">https://worldchess.com/tournaments/essf-u15</a>
16 October 2025 Qualification tournament	U18 Qualification tournament (2007, 2008, 2009) 13:00 CEST <a href="https://worldchess.com/tournaments/essf-u18-q">https://worldchess.com/tournaments/essf-u18-q</a>
17 October 2025 Final tournament	U15 final 13:00 CEST <a href="https://worldchess.com/tournaments/essf-u15-f">https://worldchess.com/tournaments/essf-u15-f</a> U18 final 17:00 CEST <a href="https://worldchess.com/tournaments/essf-u18-f">https://worldchess.com/tournaments/essf-u18-f</a>

### 3. PARTICIPATION

ESSF European Open School Championship U15/U18 - Chess Online 2025 is open for schoolboys and schoolgirls all around Europe.

All students must be enrolled as full-time students at a school in the country in which they represent.

All players must be attending schools that provide general education. Participants must be actual full-time students of the school which they represent.

There is no limitation on the number of participants per school per category.



#### Age category

The Tournament will be held in 2 different categories:

- U15 (2010, 2011, 2012, 2013)
- U18 (2007, 2008, 2009)

#### Event format - Individual Competition

This event is open for participation to:

**ESSF members:** Schools Sport Entities recognised as such by the General Assembly and in order with their rights and obligations;

**Non-ESSF members:** highest institution responsible for school sport recognized by the government of a country that is not member of ESSF;

**Directly applying schools (DAS)** recognised by their their National School Sport Federations or legal entities:

Directly applying schools can either be

- A school affiliated and regestered through an ESSF member
- A school affiliated and regestered through an non ESSF member

## 4. GENERAL AND TECHNICAL RULES

### GENERAL RULES

**ESSF European Open School Championship U15/U18 - Chess Online 2025** is organised according to current FIDE Online Chess rules and Laws of Chess. The event will be run by the Local Organising Committee (LOC). All technical-related decisions will be made by the LOC. The LOC will deal with all technical matters arising during the event as well as during the period of the event where matters are not covered by regulations.

It should be noted that where there is a sufficiently serious lack of respect for Event rules, the LOC can disqualify participants from the event. If a participant is disqualified from the event, the participation fee will not be refunded.

The official language of the event: English

### TECHNICAL RULES

The competition is organised for schoolboys and schoolgirls and will be held in two stages:

- **Qualification tournament**
- **Final tournament**

1. Participants of the teams play individually. Rankings are based on the individual results of participants.
2. Pairings will be done automatically by the World Chess playing platform <https://worldchess.com/> according to the FIDE Swiss Rules.
3. Qualification tournaments will be organised for each category.
4. Qualification tournaments will be played in a Swiss System format of 11 rounds, with time control: 3 minutes + 2 seconds increment per move, starting from move 1. Each of the 2 categories will be played individually.
5. Finals will be played by 24 best ranked participants in a Swiss System format of 9 rounds, with time control: 3 minutes + 2 seconds increment per move, starting from move 1. Each of the 2 categories will be played individually.

- Individalls who qualify for the finals will be checked by the LOC and Fair Play Panel (FPP) regarding their following of the fair rules play. World Chess algorithms will make the overall
6. check of all played games within the next few hours after the finish of respective tournament. Official results of the tournament will be confirmed by FPP within 1-2 days after the finish of the respective tournament.
  7. Players agree to turn on the `Share my Screen` function (In ZOOM) during all games/ If a player is not logged in to ZOOM chat at the published start of the game or if their webcam is turned OFF, it could result in a loss of the game.
  8. The playing platform will be **World Chess** <https://worldchess.com/>. The event is Internal rated. Tie -breaks between the tied players will be made by the playing platform (Buchholz system for Swiss tournament).
- The web page where all results of the tournament will be published is :
9. <https://worldchess.com/> and <https://europeanschoolsport.com/> after Arbitar`s final decicion.

## SCHEDULE


Participants will be informed about the schedule of play by their indicated e-mail addresses.





## SCHEDULE

DATE	ACTIVITY
15 October 2025 Qualification tournament	U15 Qualification tournament (2010, 2011, 2012, 2013) 13:00 CEST <a href="https://worldchess.com/tournaments/essf-u15">https://worldchess.com/tournaments/essf-u15</a>
16 October 2025 Qualification tournament	U18 Qualification tournament (2007, 2008, 2009) 13:00 CEST <a href="https://worldchess.com/tournaments/essf-u18-q">https://worldchess.com/tournaments/essf-u18-q</a>
17 October 2025 Final tournament	U15 final 13:00 CEST <a href="https://worldchess.com/tournaments/essf-u15-f">https://worldchess.com/tournaments/essf-u15-f</a> U18 final 17:00 CEST <a href="https://worldchess.com/tournaments/essf-u18-f">https://worldchess.com/tournaments/essf-u18-f</a>

TIME (CET)	ESTIMATED PROGRAM	INFO
13 : 00	Starting of tournament process U15 and U18	13:00 Starting of Finals U15 17:00 Starting of Finals U18
 <p>AUTOMATIC START OF THE NEXT ROUND 30 SECONDS AFTER THE LAST GAME OF THE ROUND FINISHES</p>	Round 1	
	Round 2	
	Round 3	
	Round 4	
	Round 5	
	Round 6	
	Round 7	
	Round 8	
	Round 9	*Last round for Finals
	Round 10	
	Round 11	*Last round for Qualifications

### **Important Remarks**

- Registered players will be informed about instructions regarding Hosting platform
- The program in the above table is an estimated tournament schedule. Starting times of the rounds may differ due to the investigation of fair play rules.
- During the Qualifications, Arbiters will be in contact with players via Zoom platform
- During the Finals Arbiters will be in contact with players via Zoom meeting platform

### **FAIR PLAY AND ORGANIZATION RULES**

By registering for the tournament all participants confirm to have read and accepted these regulations :

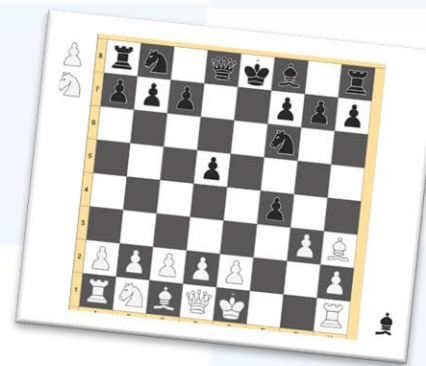
- During the event participants should play only by themselves and they are not allowed to be assisted by other people)
- It is not allowed any software/application to be open during the games except the browser with the playing platform opened and ZOOM Client)
- Any player could be excluded from the tournament by the decision of the Fair Play Panel due to Fair Play rules. Fair play Panel could exclude players during the tournament or after the tournament)
- A special Anti-cheating detection software will be used during the tournament) @ Additionally, games will be checked manually)



- Players must register and compete with their real names and surnames).
- Players must use ZOOM during all games of the Final tournaments. LOC will also check players through ZOOM) .
- Players, who will not open Zoom connection and/or not share their screen during games or turn OFF their webcam, shall be withdrawn from the tournament) .
- Streaming through any broadcast platforms including Twitch, YouTube or other online streaming platforms is not permitted for participants during their tournament games) .
- The LOC would have no responsibility for any technical problems arising for players during the games but retains the option to pair any player for the next round) .
- The fair-play measures are based on resources of the Host Internet Platform (hereinafter referred to as HIP) and external tools which are to be approved by LOC and follow FIDE's Fair-Play Regulations.
- LOC will nominate a Fair-Play Panel (hereinafter referred to as FPP). The FPP consists of the Chief Arbiter, one Fair-Play expert and one member of LOC.
- The FPP works to ensure fair results for each game and suggests any additional measure that is considered necessary and sufficient in order to ensure fair-play conditions during the tournament.
- In case third parties' tools are used, FPP maintains regularly monitored reports coming from such tools and promotes any necessary investigation.
- FPP keeps the right to disqualify any player for a suspected fair-play violation during the course or after the conclusion of the tournament, based upon the results of the anti-cheating algorithm of the HIP and/ or external tools and/or other evidence deemed sufficient by the panel itself to establish a cheating incident.



- The Chief Arbiter, in consultation with FPP, in case he finds it necessary, has the right to disqualify a player.
- The disqualified player may be declared lost in one or several games he/she played in the current or/and previous rounds.
- Neither LOC, nor HIP claims that the determination of a suspected fair-play violation is proof of actual cheating or an admission of guilt by the disqualified player. Such a determination shall not affect the ordinary status of the player for over-the-board competitions within the jurisdiction of FIDE or its members.
- By entering the tournament each player accepts the above-mentioned Fair-Play measures as a condition of entry in a voluntary sports event and agrees that his/her participation takes place subject to these FairPlay measures.
- Arbiters' decisions and FPP decisions cannot be appealed.
- The LOC has the right to change the schedule, update the regulations or decide upon any matter that is not mentioned in the current .



# ADMINISTRATION

## REGISTRATION

July 01, 2025	<p>Opening of First Registration</p> <p><i>During First registration students register individually or through School or through National School Sport Entity.</i></p> <p><i>(name, date of birth, gender, passport)</i></p>
October 05, 2025 (23:59 CET)	<p>Closing of First Registration</p> <p>*Payment with discount</p> <p>40 EUR + 10 EUR ESSF Levy</p>
October 06, 2025	<p>Opening of Second Registration</p> <p><i>During Second Registration students register individually or through School or through National School Sport Entity.</i></p> <p><i>(name, date of birth, gender, passport)</i></p>
October 10, 2025 (23:59 CET)	<p>Closing of Second Registration</p> <p>*Full Payment</p> <p>50 EUR + 10 EUR ESSF Levy</p>

## HOW TO REGISTER

All members/schools who intend to participate in the event should fill in a **Registration Form**, which can be found enclosed to Bulletin 1. **Registration Form is to be filled in with Latin letters -English version.**



All application are sent to email [essfeuropeanchess2025@gmail.com](mailto:essfeuropeanchess2025@gmail.com)

## INFORMATION TO BE FILLED IN EXCEL FORM

- Country
- Name, Last Name of Participant
- Date of Birth
- E-mail address MANDATORY
- Phone number
- FIDE ID number (if applicable)
- Name of School
- School E-mail



NOTE: Please enter correct e-mail address. Further information and the tournament will be communicated with indicated e-mail.

## DOCUMENT UPLOAD

- Upload of duly filled and signed Consent Form

- After submitting the registration form, a manual verification process will be done by the organizers. In case of successfully passed registration, participant will receive a registration confirmation e-mail with information about payment of the entry fee.
- In case of unsuccessful registration, the organizers will contact the participant via their e-mail with the request to provide the necessary data.
- Once payment has been made, participants will receive an e-mail letter to their indicated e-mail addresses with an invitation to register on the **World Chess** playing platform <https://worldchess.com/>.
- After creating an account on the playing platform, participants are ready to join the tournament.
- Before the tournament participants will receive an invitation letter with the link for joining the tournament.



# FEES

## FINANCIAL CONDITIONS

To participate, each participant is required to make **Full Payment 7 days after First or Second Registration.**

**Please note that the participation to the event is granted only by the Full Payment.**

**Deadline for Full Payment:**

**October 05, 2025 (23:59 CET) for First Registration or  
October 10, 2025 (23:59 CET) for Second Registration.**

**If the amount is not paid within the given deadline, the registrations will not be considered valid and the restarted participants will be automatically removed.**

The payment is non-refundable in the event of non-participation.

Amount shall be paid **by bank transfer to the** to the following account (all bank charges are to be met by the participating country).

**Account with Institution/Beneficiary's Bank:** ATOS BANK AD BANJA LUKA

**Address of the Bank:** Jevrejska 71, Banja Luka, REPUBLIC OF SRPSKA/BOSNIA AND HERZEGOVINA

**BIC/Swift Code:** SABRBA2B, ATOS BANK AD BANJA LUKA

**Payee/Holder:** SAVEZ ZA ŠKOLSKI SPORT REPUBLIKE SRPSKE

Mladena Stojanovića bb, 78 000 Banja Luka, Republic of Srpska, Bosnia and Herzegovina

**IBAN/ Account Number:** BA395672410001057260

**Reference:** ESSF Chess 2025 registration fee + *Name of Participant+ Country*



## PARTICIPATION FEE

The participation fee is composed of:

- 40€/ per participant for First Registration or
- 50€/ per participant for Second Registration
- *ESSF levy*: 10€ per participant (ESSF member) or 20€ per participant (non ESSF member)



Participant		FEE (1 <sup>st</sup> /2 <sup>nd</sup> Registration)		ESSF Levy Minimum	Total Minimum
1	X	40€/50€	+	10€	50€/60€



## PRIZES

All participants of the event will be awarded with

- Participation Certificate for each player

The top 5 participants in each category will be awarded with

- Certificate indicating ranking
- World Chess Premium membership

The participants ranked 1st in each category will be awarded with

- Certificate indicating ranking
- World Chess Premium membership
- World Chess Academy sets



# MEDIA AND COMMUNICATION



Contact information: [info@europeanschoolsport.com](mailto:info@europeanschoolsport.com)



The official results and information can be found at:  
<https://europeanschoolsport.com/> and <https://worldchess.com/>.

## Social Media Guidelines

Spread the word on ESSF European Open School Championship U15/U18 - Chess Online 2025!  
We would love for you to help us support the young players participating in the first ESSF online event.



Follow the official Instagram page: @ESSFSPORTS

Use the official event hashtags: #EuropeanSchoolChess @Chess

Follow news on websites:  
<https://europeanschoolsport.com/>

**Looking forward to meeting you ONLINE on  
15-17 OCTOBER 2025!**



@ESSFSPORTS



@ESSF